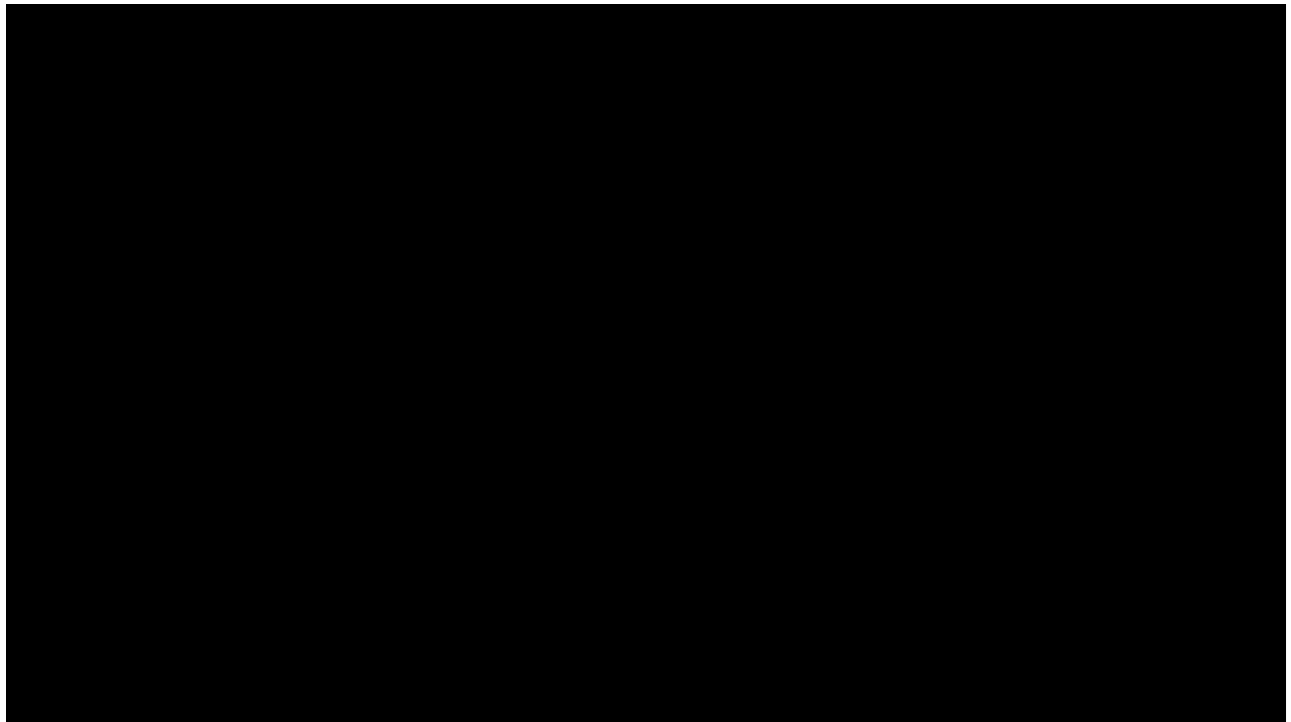
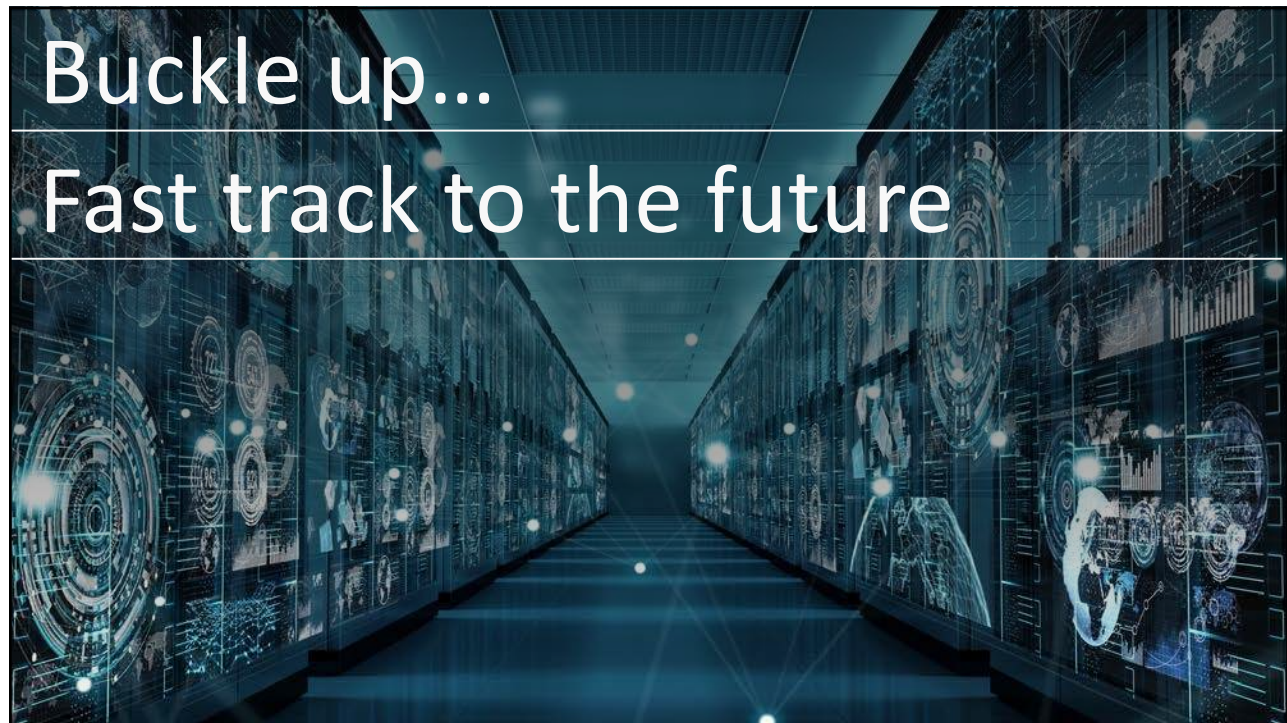




1



2



3



4

Jetpack pizza delivery



5

AI robots capable of emotion.



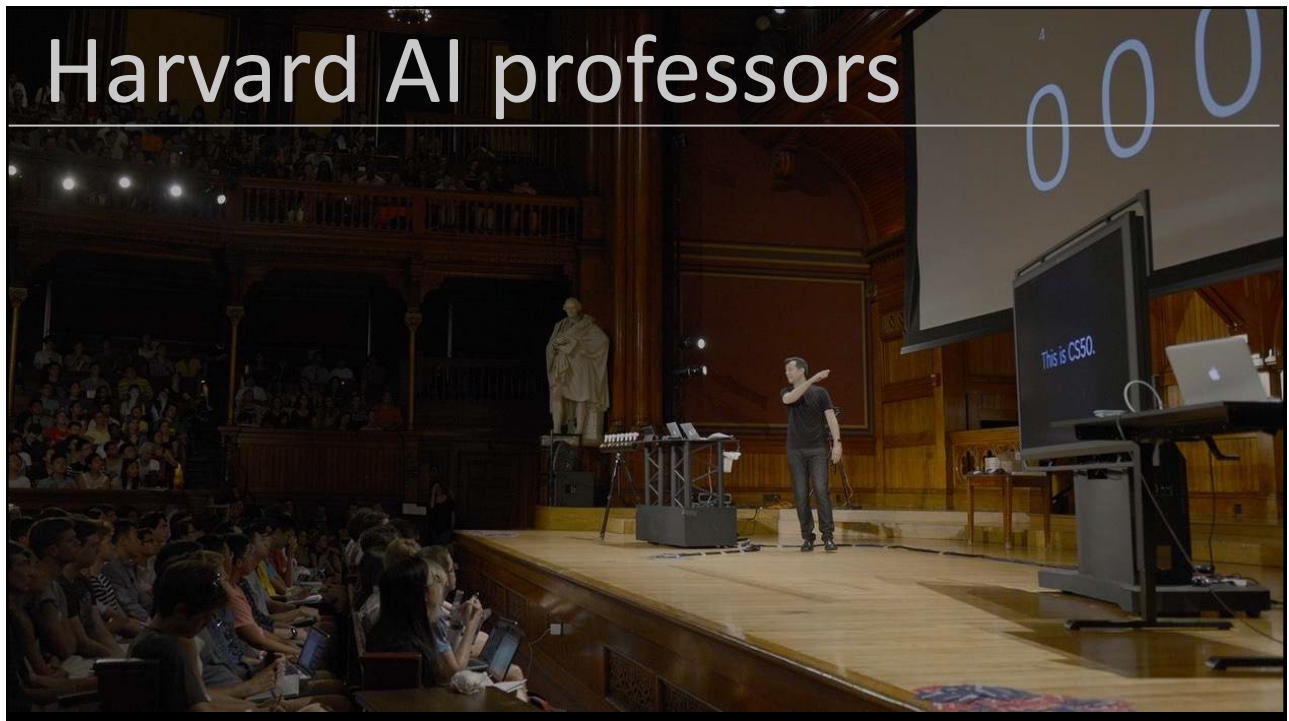
6

... and printing



7

Harvard AI professors



8

Digital Humans

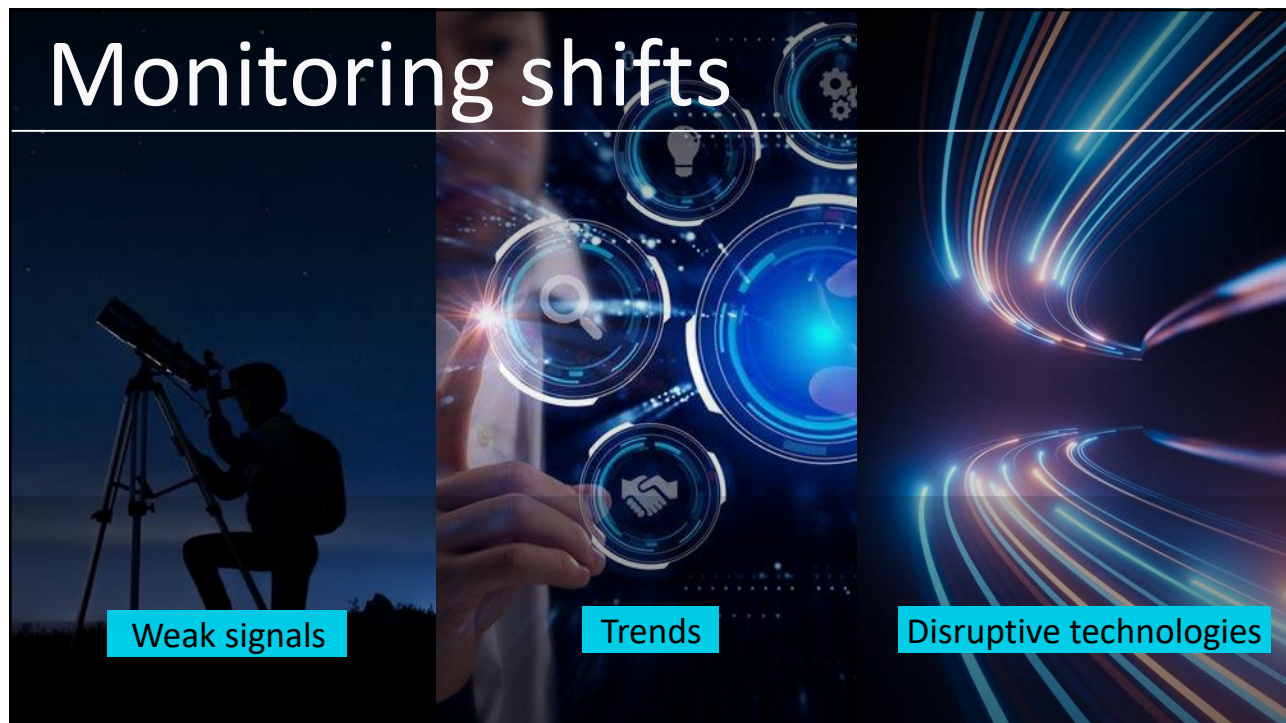


9

How do we deal with all this change?



10

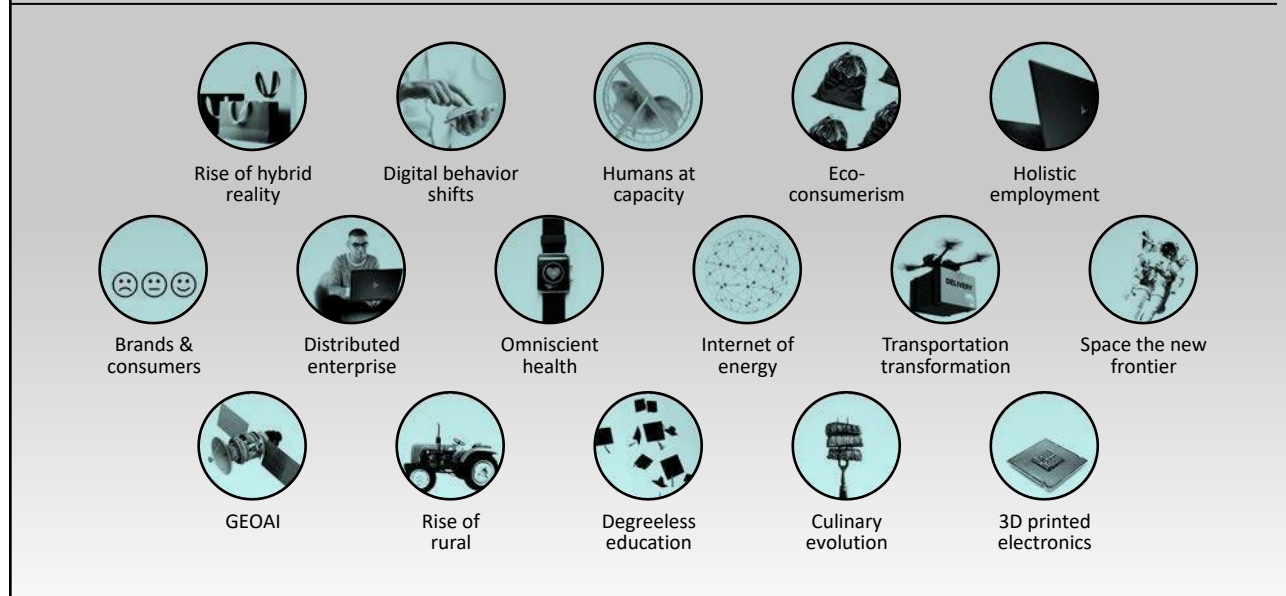


11



12

Weak signals



13

Trends



14



15



16



17



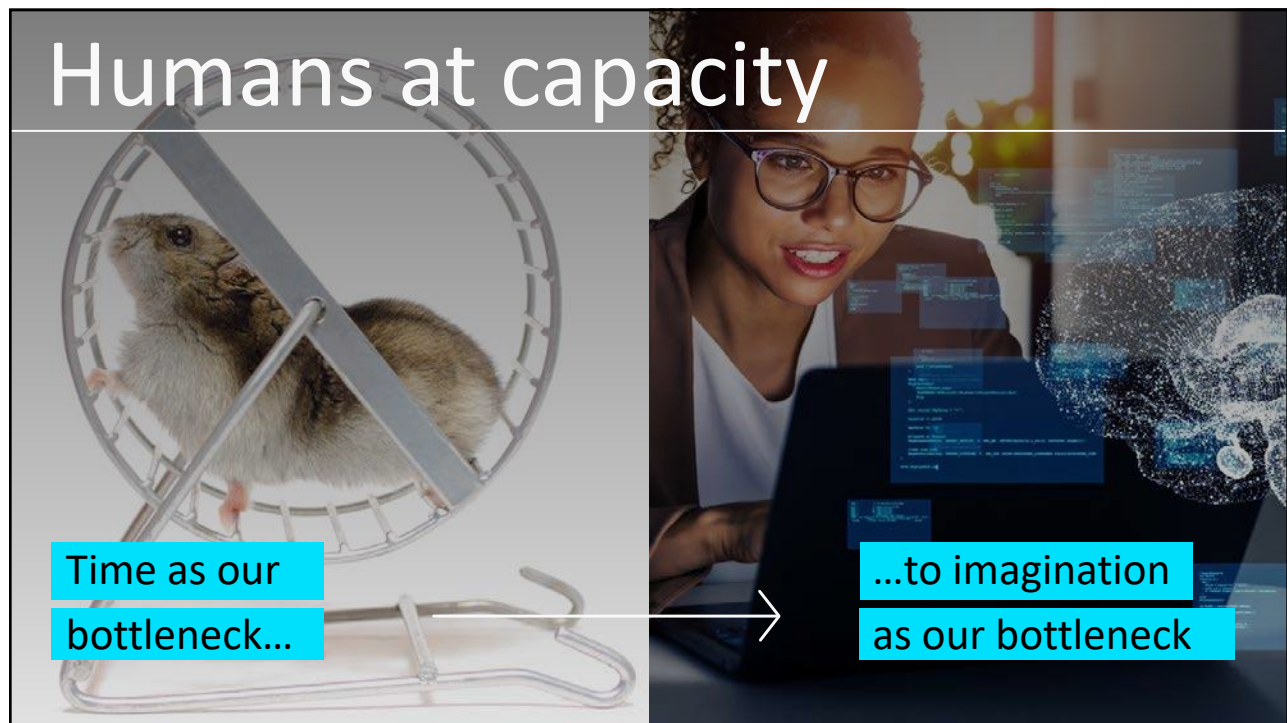
18



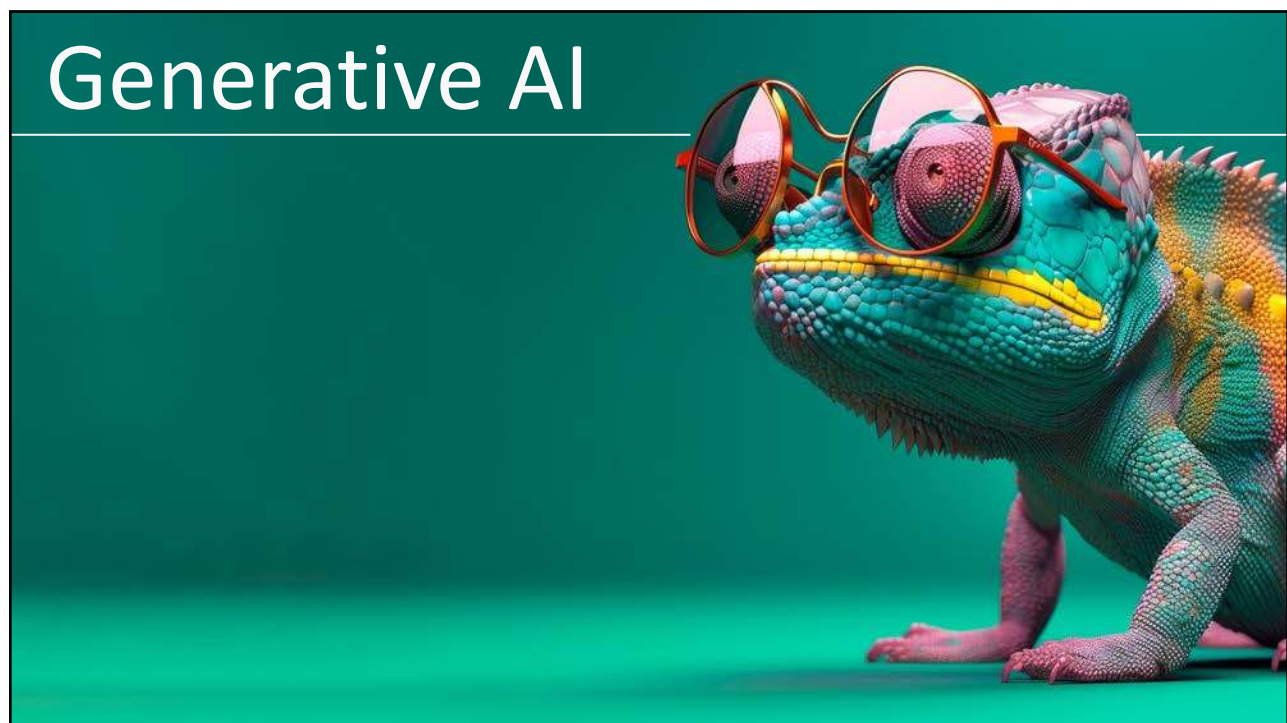
19



20



23



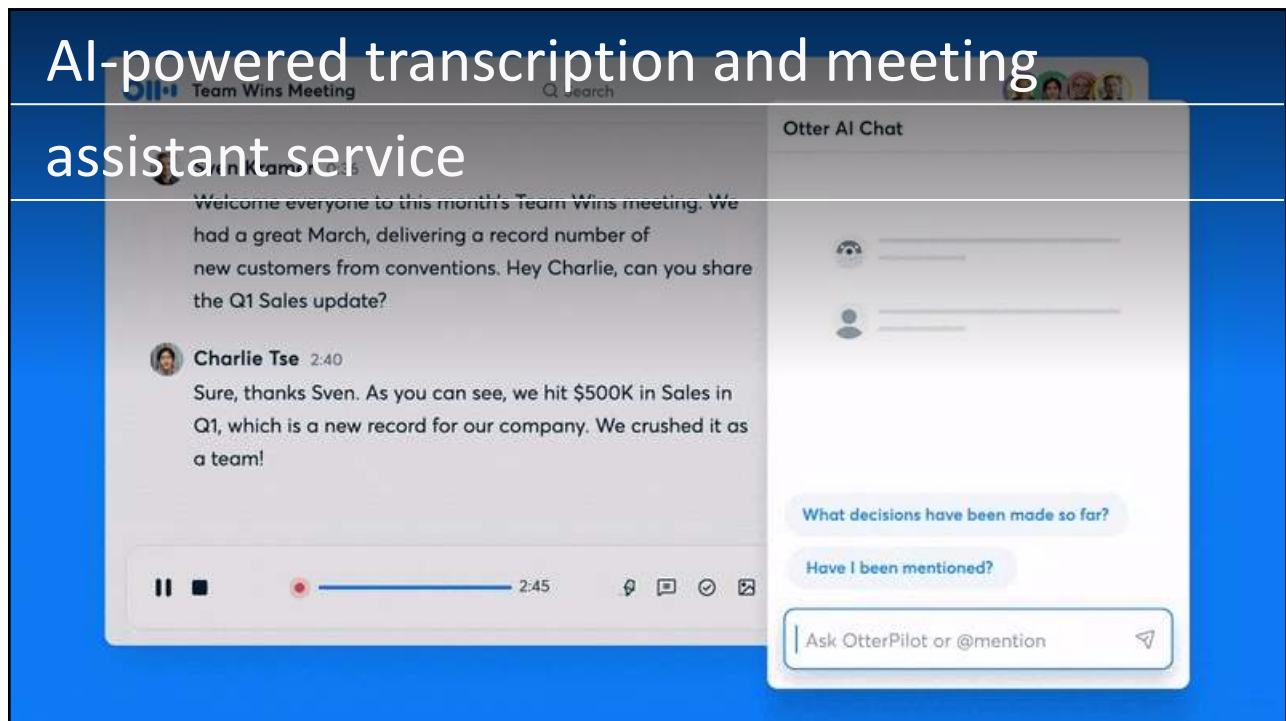
24

Generative AI has accelerated automation adoption scenarios by over a decade



25

AI-powered transcription and meeting assistant service



26

Cody – your AI coding assistant – answers code questions and write code for you

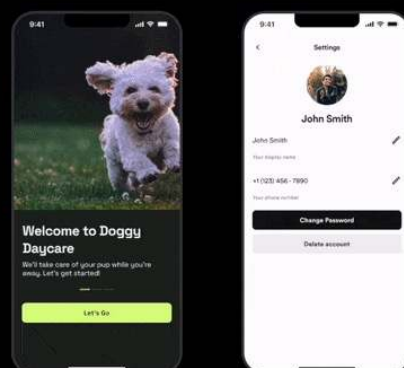
```

14     get email() {
15         return this._email;
16     }
17 }
18
19
20
21 + // Email validation function
22 function validateEmail(email) {
23     var regex = /^(?:(?:[^\<>()\[\]\\.,;:\s@"]+(\.[^\<>()\[\]\\.,;:\s@"])*))$/;
24     return regex.test(email);
25 }
26
27 // Create a new user
28 let user = new User('John Doe');
29
30 // Setting valid email
31 trv {

```

27

Generative AI that can turn a text prompt into an editable UI design in an instant



Describe your design... Generate

28

An AI model that can turn a text command into sets of actions



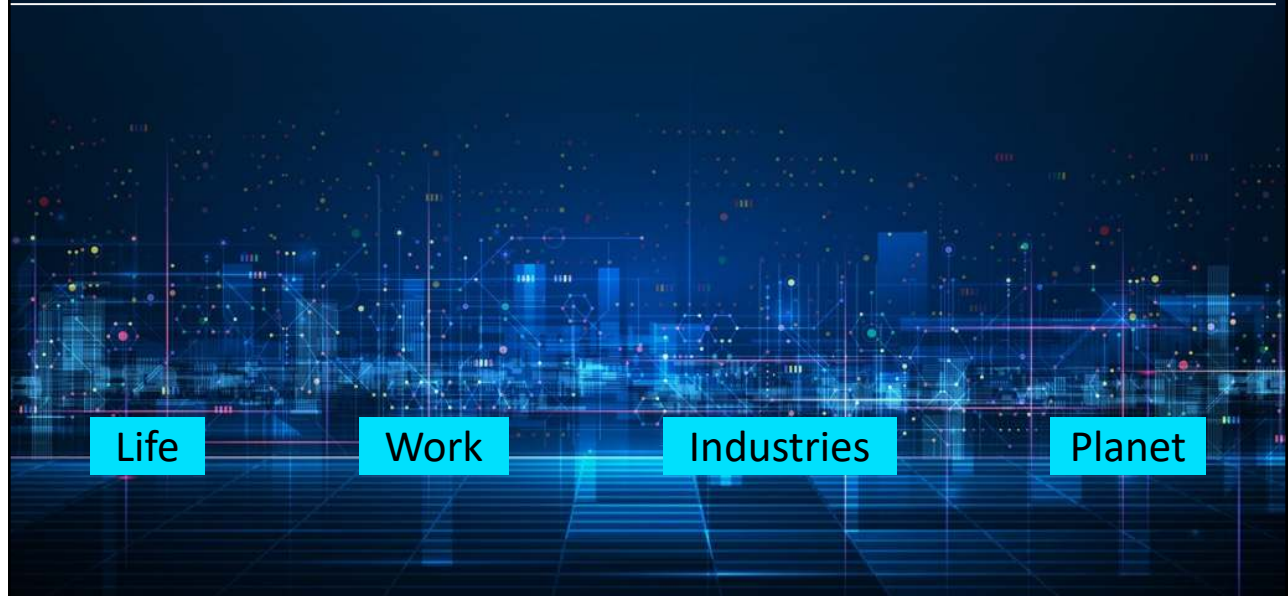
29

Inflection point

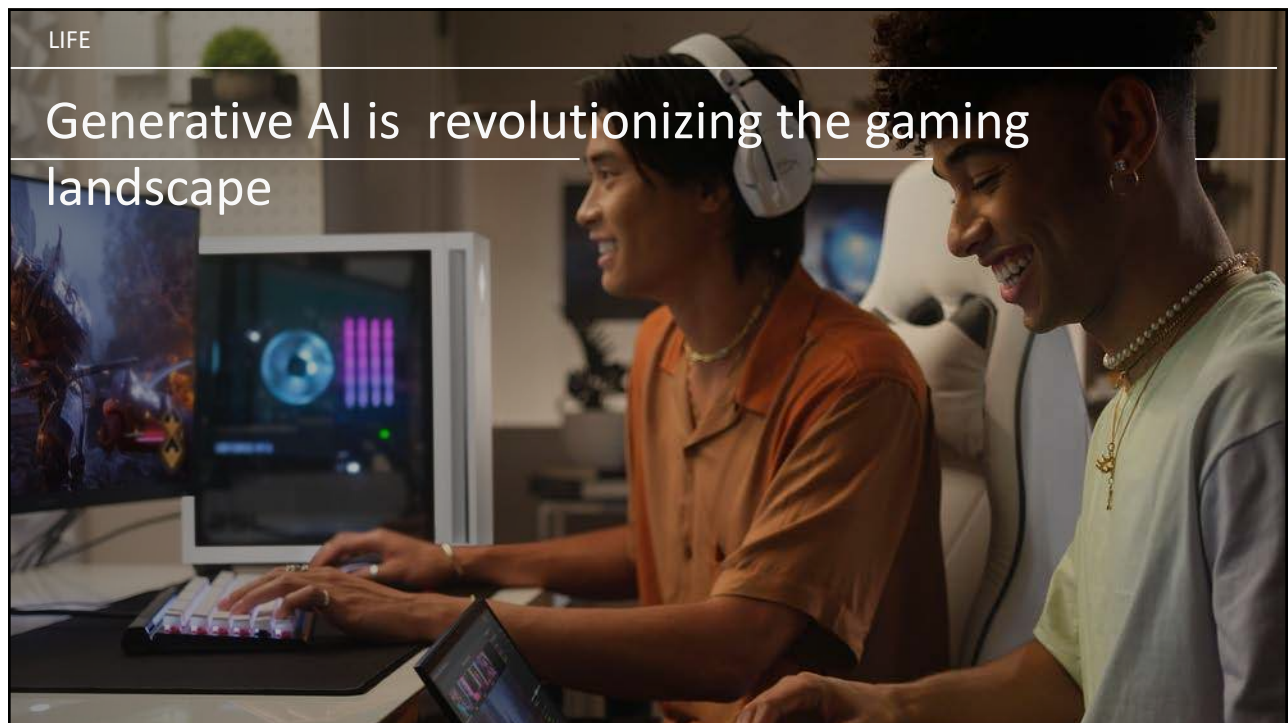


30

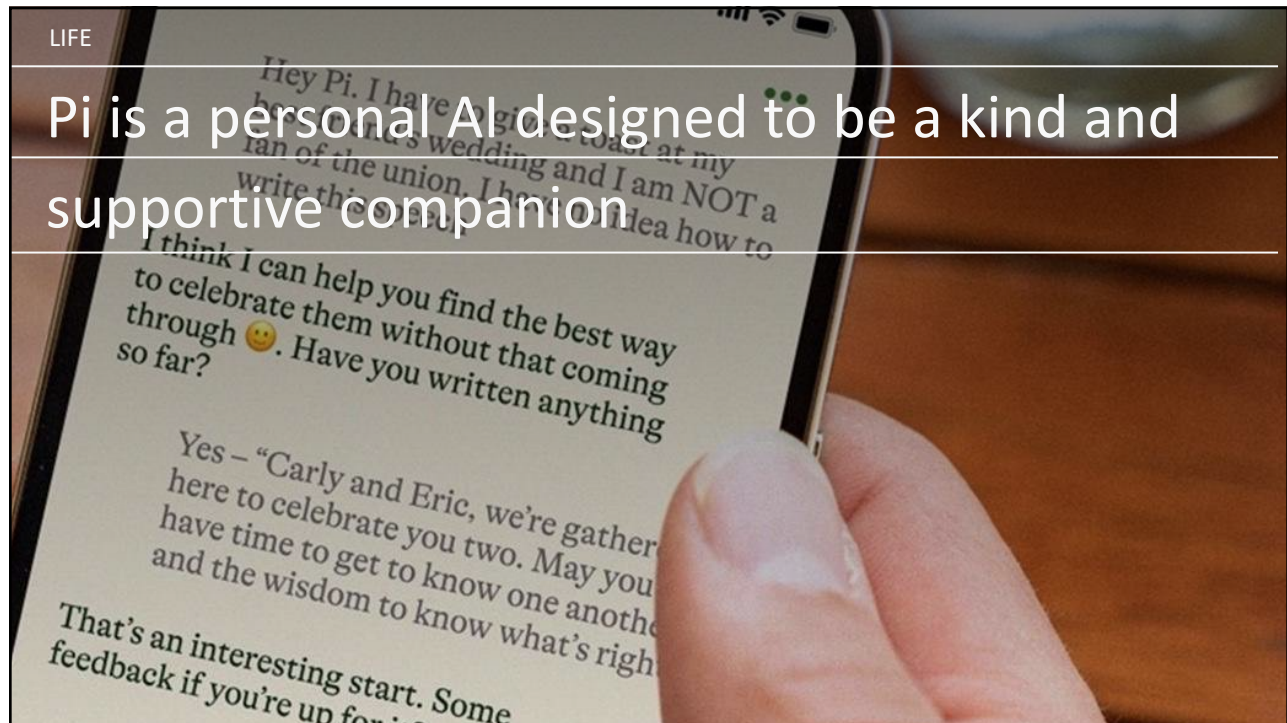
AI shaping our future



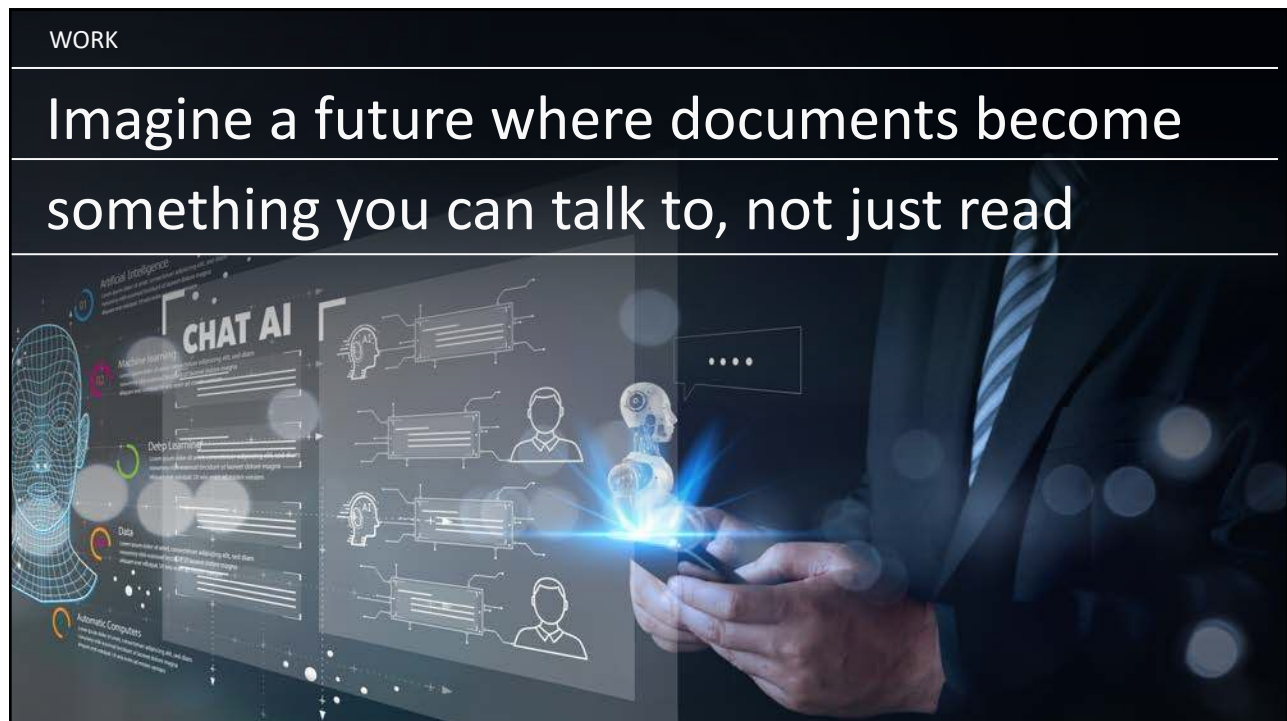
31



32



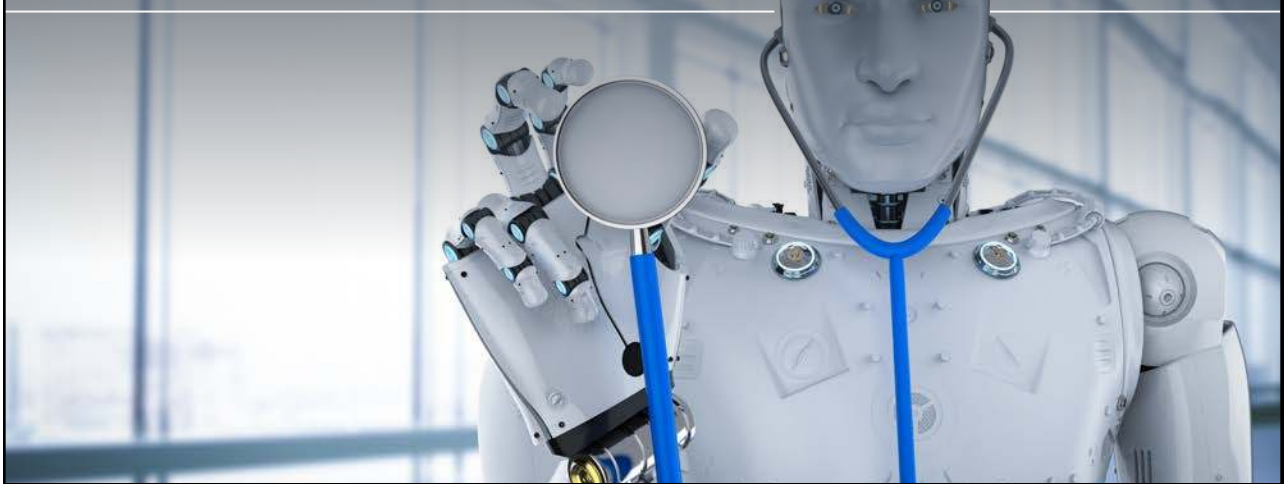
33



34

INDUSTRY | HEALTHCARE

Google's Med-PaLM 2 AI could bridge the gap in areas with limited doctors



35

INDUSTRY | MANUFACTURING

5MM CAD Designers to 200MM 3D Content Creators



36

INDUSTRY | TECHNOLOGY

Age of AI will change role devices play in our lives

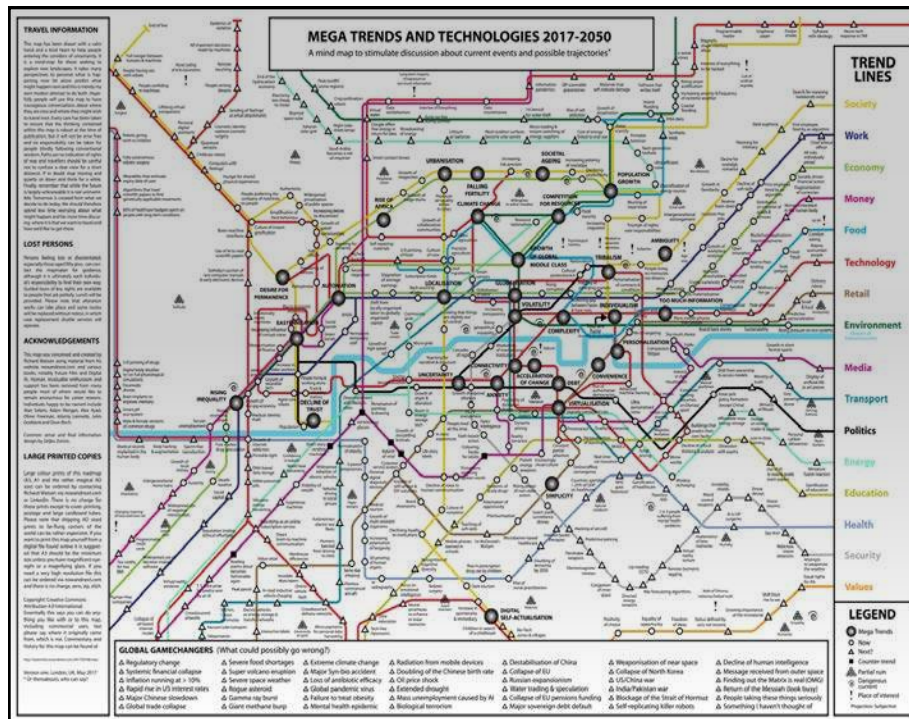


37

How do we deal with all this change?



38



<https://www.nowandn ext.com/thinking-tools>

Roadmap to the future

A mind map to stimulate discussion about current events and possible trajectories

39



40

Martec's Law

Technology changes exponentially (fast) yet organizations change logarithmically (slow).

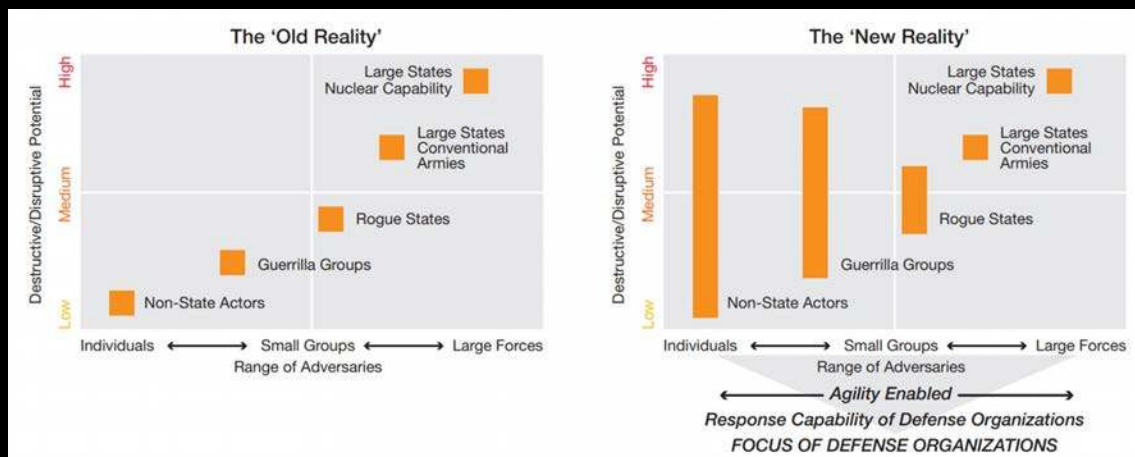
HOW DO WE MANAGE?



41

Adaptive organizations

Understand the range of adversaries and their disruptive potential



42



43



44



45



46



47